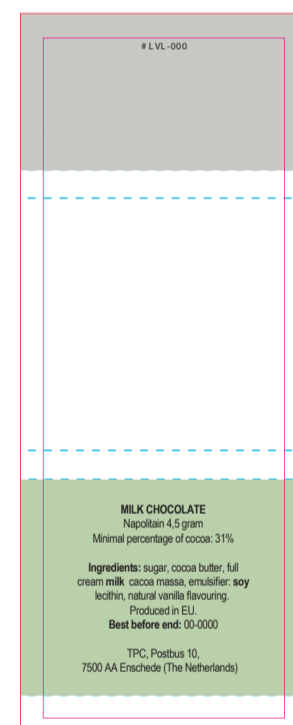
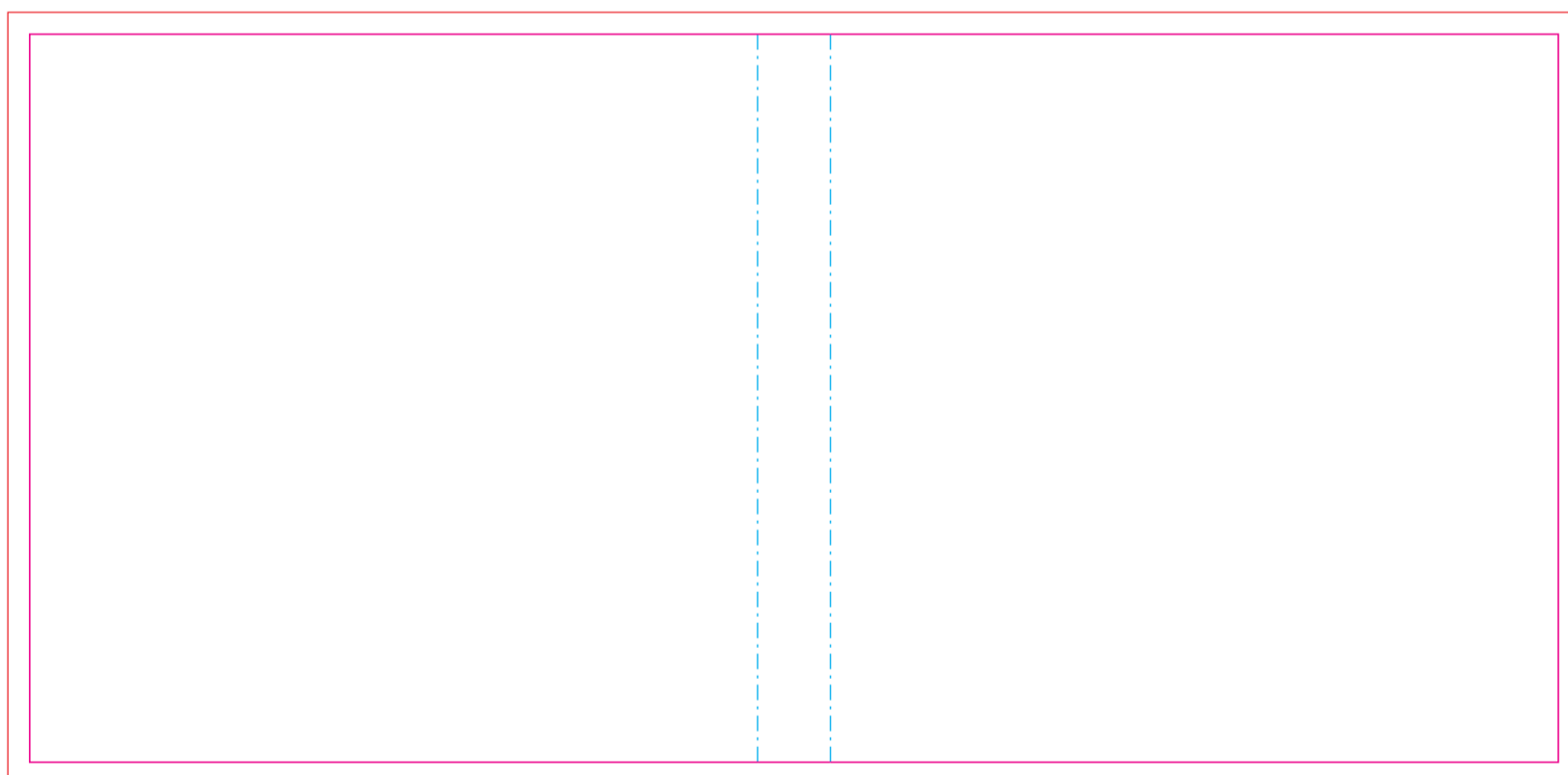
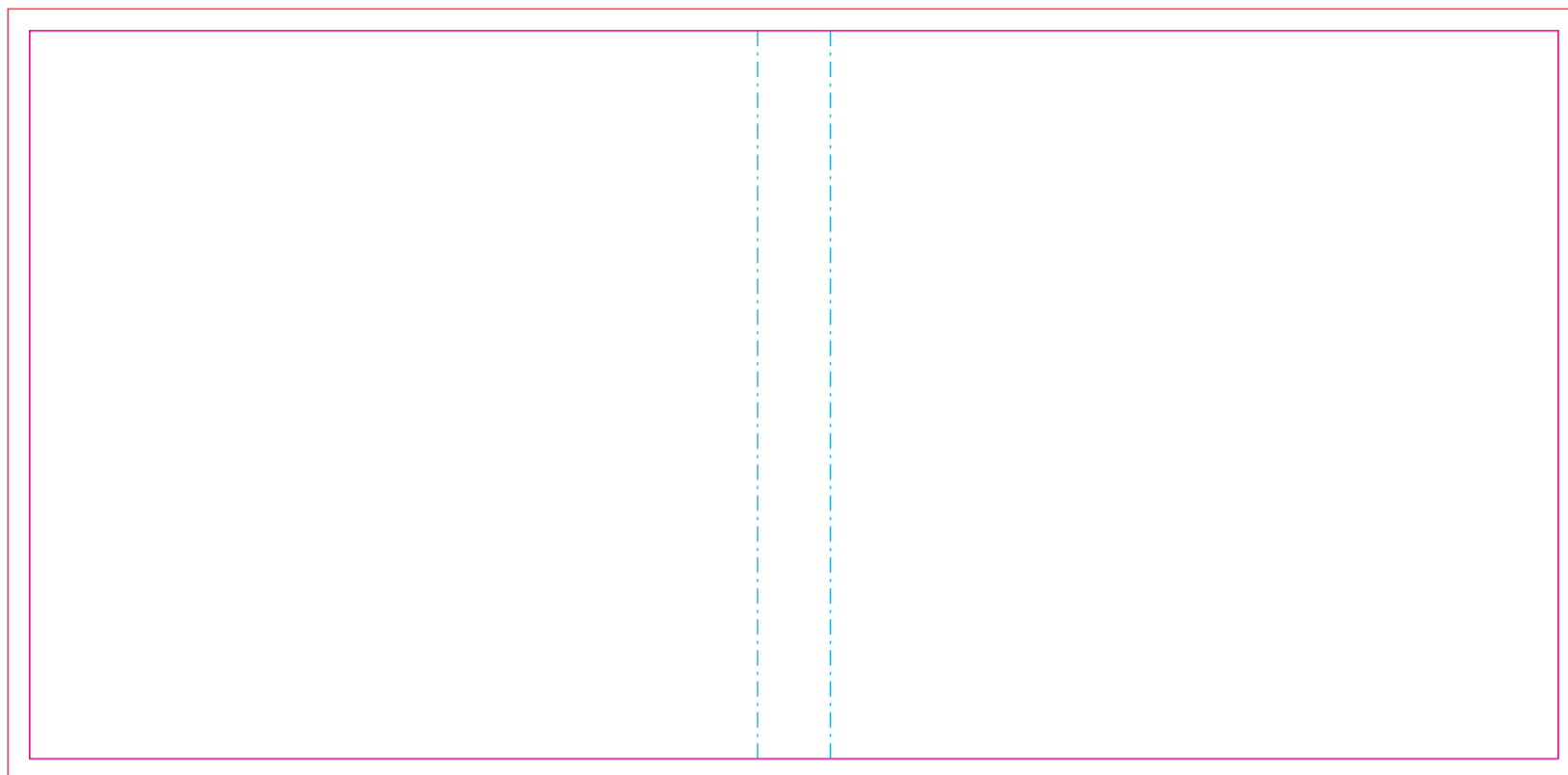


1590

VOUWKAART MET 1 NAPOLITAIN MELK CHOCOLADE / FOLDING CARD WITH 1 NAPOLITAIN MILK CHOCOLATE / KLAPPKARTE MIT 1 NAPOLITAIN MILCH SCHOKOLADE

Drukformaat / print size / Druckformat / format d'impression:
100 x 210 mm



<p>NL</p> <p>MELKCHOCOLADE Napolitain 4.5 gram Minimale cacao percentage: 31%</p> <p>Ingrediënten: suiker, cacao boter, melk poeder, cacao massa, emulgator: soja lecitine, natuurlijke vanille aroma. Geproduceerd in de EU. Ten minste houdbaar tot einde: 00-0000</p> <p>TPC, Postbus 10, 7500 AA Enschede (The Netherlands)</p>	<p>EN</p> <p>MILK CHOCOLATE Napolitain 4.5 gram Minimal percentage of cocoa: 31%</p> <p>Ingredients: sugar, cocoa butter, full cream milk, cocoa mass, emulsifier: soy lecithin, natural vanilla flavouring. Produced in EU. Best before end: 00-0000</p> <p>TPC, Postbus 10, 7500 AA Enschede (The Netherlands)</p>	<p>DU</p> <p>MILCHSCHOKOLADE Napolitain 4.5 Gramm Mindestanteil an Kakao: 31%</p> <p>Zutaten: Zucker, Kakaobutter, Vollmilchpulver, Kakaomasse, Soja Lecithin, Natürliches Vanille-Aroma. Produziert in der EU. Mindestens haltbar bis Ende: 00-0000</p> <p>TPC, Postbus 10, 7500 AA Enschede (The Netherlands)</p>	<p>FR</p> <p>CHOCOLAT AU LAIT Napolitain 4.5 grammes Pourcentage minimal de cacao: 31%</p> <p>Ingrediënten: sucre, beurre de cacao, entier crème de lait cacao massa, émulsifiant: soja lecitine, arôme naturel de vanille. Produit dans l'UE.</p> <p>TPC, Postbus 10, 7500 AA Enschede (The Netherlands)</p>	
<p>BEDRUKKINGS FORMAAT PRINTING SURFACE BEDRUCKBARE FLACHE SURFACE D'IMPRESSION</p>	<p>VOUWLIJN FOLDING LINE FALZLINIE LIGNE DE PLIAGE</p>	<p>AFLOOP BLEED BESCHNITT FOND PERDU</p>	<p>GEEN TEKST PLAATSEN NO TEXT HERE KEIN TEXT HIER PAS DE TEXTE ICI</p>	<p>INGREDIËNTEN INGREDIENTS ZUTATEN INGRÉDIENTS</p>